



## Sinks of The Roundstone Cave Trash Clean Up A Conservation Success Story

Saturday, October 29, 2005, Rockcastle County, KY

Cleaning up Rockcastle County's Sinks of the Roundstone Cave filled a 16-cubic-yard dumpster with such trash as tires, clothing, beer cans and broken glass. Volunteers also found 15 dead bats shot by paintball guns, said Bob Dobbs of the Greater Cincinnati Grotto, one of the participating groups. "It was sad to see someone would do that," Dobbs said. About 40 volunteers climbed into the cave to haul out debris left behind by visitors and floods. The non-profit Rockcastle Karst Conservancy organized the event.

Over 40 cavers attended. The last crew in the cave reported having a difficult time finding trash. This is quite an accomplishment especially if you are familiar with how much trash can be in this cave.

Five prizes were awarded. The winners were Neena Jud, Tama Cassidy, Janine Brown, Kenny Hedges and Wayne Barton.



Daniel Bower & Wayne Barton at the railroad entrance to Sinks

Continued next page

### Inside This Issue:

Sinks of the Roundstone Cleanup	1
RKC Quicknews	2
Officers and Directors	2
Letter from the Chair	3
Minutes, Aug 2005	4
E. coli contamination	7
Protecting Karst from Point Source Pollution - by Jim Currens	8
Letter to NSS Conservancy Forum from Charles Maus: "Living On Karst" revisions	10
New RKC Members	11
How to become a member of RKC	11

### conservancy

(k n-sûr v n-s )

- noun -

An organization dedicated to the conservation of wildlife and wildlife habitats in the United States.





## Officers and Directors

### Officers

Chairman	Andy Niekamp	andyniekamp@gmail.com
Vice Chairman	Pat Hutson	caver723@aol.com
Treasurer	Werner Jud	orion@one.net
Secretary	Lisa Pruitt-Thorner	batscout@aol.com

### Directors

Werner Jud	orion@one.net
Andy Niekamp	ajniekamp3@aol.com
Pat Hutson	caver723@aol.com
Lisa Pruitt-Thorner	batscout@aol.com
<i>To Be Determined</i>	

### Committees

Membership	Andy Niekamp	ajniekamp3@aol.com
Newsletter	Traci Fearday	cavecricket@hotmail.com



Sinks Cleanup,  
Continued



*Bob Dobbs & James Dixon in Sinks*

#### Participants:

Bill Addington  
Thor Bahrman III  
Wayne Barton  
Ken Bonenberger  
Daniel Bower  
Jerry Brandenburg  
Janine Brown  
John Cassidy  
Tama Cassidy  
Hutson Combs  
Gerald Dixon  
James Dixon  
Bob Dobbs

Cindy Dobbs  
John Ellerbrock  
Alan Fearday  
Traci Fearday  
Joe Gibson  
Chris Hacker  
Kenny Hedges  
Kim Hedges  
Austin Hedges  
Mike Huseman  
Vicki Huseman  
Pat Hutson  
Joetta Hutson  
Werner Jud

Neena Jud  
Matt Keller  
Leanne McHenry  
Andy Niekamp  
Lisa Pruitt-Thorner  
James Renner  
Michael Rzesutock  
Dalene Smith  
Leah Stich  
Pete Stow  
Dana Sutherland  
Mike Wuertth  
Pat Yuellig  
Robert Yuellig

**Thank you to King Bottling for the  
Climax Water donations!**



### RKC Quicknews

Membership:  
82 individual members  
and  
6 organization members



RKC has educational  
material for lending.

See the website:

<http://rkci.org/library/index.htm>  
or contact Tammy Otten:  
tammyotten@yahoo.com



## Letter from the Chair

Greeting RKC Members,

Thank you for a successful first year! When we began 2005 RKC was just a non-profit corporation with five pages of Articles of Incorporation and no members. We have accomplished much this year. We finalized our Bylaws, signed up 82 individual members and 6 organization members. We had three successful fund raisers. We promoted ourselves at the NSS Convention, Karst-O-Rama and Wormfest. We had a very successful first conservation project – a trash pick up project at the Sinks Of The Roundstone Cave. The project gave us much needed media attention in the Mount Vernon Signal and Lexington Leader-Herald newspapers. Our name is now out in the caving community and in cave country. I thank you for making our first year a great success.

Our number one goal remains obtaining tax exempt status from the IRS and becoming a 501(c)3 organization. Our application was filed on April 29. In mid-November our application was assigned to an IRS agent. The agent replied with seven questions asking for more information. Two questions were procedural that dealt with filing the correct signed and stamped forms. Three questions dealt with our intended use of conservation easements. The last two questions asked for clarification on our proposed budget and about any business relationships. We responded to the IRS request thoroughly and on time. We are happy to report that our mission and the contents of our Bylaws and Articles of Incorporation were not the subject of any questions. Unfortunately the processing time for tax exempt status is over seven months right now.

We hope that 2006 is just as successful for RKC as 2005. It will be with your support. The strength of RKC lies with our most precious asset – you, our members. We can accomplish anything with your support. We have challenges and many opportunities ahead of us. I look forward to your continued support.

Thank you for a successful first year!

Andy Niekamp

RKC Chairman

**Rockcastle Karst Conservancy, Inc. (RKC)**

Minutes of Meeting, August 31, 2005

Maysville Technical and Community College, Calvert Bldg, Room C105

Andy Niekamp	Joetta Hutson	Camille Thorner (minor)
Werner Jud	Jerry Dixon	David Lee
Pat Hutson	Jerry Brandenburg	James Dixon
Lisa Pruitt-Thorner	Pete Stow	

Meeting was called to order at approximately 7:50 p.m. In attendance:

Andy had prepared an excellent agenda which kept the meeting on track.

**A. 501(c)(3) application**

The first item discussed was the 501(c)(3) application which was received on April 29, 2005 but has not yet been approved. Approximately 20% of the applications were approved for fast track processing but RKC's application was not among them. We expect to receive word by November 15. The application fee was \$500.00. The application and attached documentation is considered a public document and must be available for public inspection.

**B. Logo**

Rob Coomer created various logo designs for RKC. The horizontal logo for RKC was used on the banner and the vertical design was utilized for the t-shirts. RKC thanks Rob for all his hard work and dedication to RKC.

**C. Brochure**

Rob Coomer also created a very professional, colorful, aesthetic brochure which can be downloaded from the website. Rob printed 500 brochures for the mere cost of paper which was only \$28.90. Once again, RKC sincerely appreciates Rob's professional assistance and extends an official recognition of his contribution.

**D. Mailings**

In early May, Andy mailed 191 letters and brochures to GCG and DUG. The goal was to promote awareness of RKC and drive for members. The mailing was a success. The cost of the mailing was \$80.88. Andy asked for membership lists from BGG and ESSO. Jerry Dixon agreed to provide one from BGG and Lisa Pruitt-Thorner promised one from ESSO.

**E. T-Shirts**

Andy had 48 RKC T-shirts printed for a cost of \$238.79. The sales price is \$15 each for nonmembers and \$10 for members. Approximately 8 shirts remain. Rob Coomer supplied the artwork.

The board and esteemed members in attendance considered whether to keep T-shirts in stock and it was voted unanimously that when the inventory is reduced to 2 shirts, more would be ordered.

**F. Newsletter**

Traci Fearday produced the first RKC news in June, there will be 4 editions per year.

**G. CDs**

Andy moved \$4,000 in June into a short term CD, earning 2% annually. The CD matures on Sept. 18.

**H. Checks**

In July, Werner Jud had professional checks printed with the RKC logo, cost was \$196.34.

**I. Banner**

In July, Andy had an RKC banner made for \$88.50 with artwork supplied by Rob Coomer. Banner is 6 ft x 2 ft.



## **J. NSS Convention**

At the 2005 Alabama convention, an RKC t-shirt was entered in the shirt salon. Andy also set up a table and placed brochures for distribution. RKC had an ad in the convention program. Andy attended the conservancy workshop and gave a 5 minute presentation on RKC. Andy mentioned that an overriding concern among conservancies is liability insurance and several are opting to "go without."

## **K. Karst O Rama and Wormfest**

RKC had a booth and fund raiser at KOR. A total of \$1,332.00 was collected with expenses of \$181.41. Jo and Pat Hutson did an excellent job organizing the fund raiser, soliciting donations, etc. Money raised came from dues of \$210, t-shirt sales of \$110, water sales of \$44 and the general fundraiser of \$968.00. Each KOR registration bag included an RKC brochure and there was an ad in the guidebook.

RKC deeply appreciates the efforts of the Hutsons, Andy Niekamp, all who donated goods and the cooperation of GCG and the GSP Committee.

RKC had a mini booth at Wormfest on Aug 19-21, during which \$322.50 was raised. Various businesses and individuals donated door prizes and again, their contributions are greatly appreciated.

## **L. Officer Reports**

Chairman - Andy made his chair report within his typewritten agenda and throughout the meeting.

Vice chairman - Pat Hutson made no official report but contributed valuable comments and information to the meeting as items were discussed.

Treasurer - Werner Jud made a treasurer's report and passed out a typewritten balance sheet, complete to August 31, 2005. RKC currently has \$2,525.04 in the checking account at Bank One and a \$4,000 CD. Membership dues received were \$5,447.50, RKC raised \$1,447.00 from merchandise, and donations of \$67.50 were received. Expenses totaled \$1,094.09, nearly 50% of which was the 501(c)(3) application fee of \$500.00. Other expenses included postage, advertising, shipping, etc.

Secretary - Lisa Pruitt-Thorner read the March meeting minutes, approved.

## **M. Appointments**

The board confirmed appointments of Traci Fearday as newsletter editor and Deb Bledsoe as community liaison and karst monitoring coordinator.

## **N. Membership update**

RKC has 72 members now. Andy asked that officers send welcoming emails to each new member. RKC has 2 organizational members.

## **O. Life Members**

It was decided by all those in attendance, including the board unanimously, that life members should receive a free t-shirt with the logo and "life member" insignia. Enough t-shirts will be printed to give each current life member a t-shirt plus have a small inventory for future life members.

## **P. Donations/dues**

It was decided that organizations which donate money will be considered members if their donations meet the levels prescribed by RKC, the donor agrees, and desires it handled this way. RKC believes that such membership dues will nevertheless be considered donations by the IRS, since members receive nothing of value in exchange for said dues. Ex: If XYZ grotto donates \$25, RKC will give XYZ an organizational membership if the donor desires.

## **Q. Membership years, dues**

The Board voted unanimously to change the dues renewal date from January 1 to April 1 since money is tight for many people around the Christmas holidays. The Board also voted unanimously to reduce organization dues from \$50 to \$25. It was felt that this might encourage more organizations to become members of RKC.



### R. Fifth Director search

We need a fifth director, no particular candidate was discussed.

### S. Display case

The board discussed whether to purchase a display case for \$265.00. The case would be hardy, professional and assist RKC in "getting the word out". RKC deferred the decision until later. Jo Hutson and David Lee will see if a better or cheaper source exists.

### T. Expenditures

Bylaws include a provision for electronic meetings. If RKC funds are needed for a project, a meeting can be conducted electronically.

### U. Conservation

1. Sinks of the Roundstone clean up. RKC will take on it's first public service project, a clean up of Sinks of the Roundstone cave. The clean up is scheduled for Saturday, October 29. An RKC meeting will be held the next day, Oct. 30. Andy will coordinate the event but help is needed. Publicity, sturdy sacks and people will be among the resources required for the event. Jerry Dixon mentioned that he could possibly elicit the help of local students.

2. Water sampling. Deb Bledsoe will conduct water testing on September 10. Over a dozen karst and cave sites in Rockcastle County will be sampled for e. coli bacteria. Please volunteer to help.

3. RKC presence at caving events. It was decided that, as part of RKC's general membership and marketing efforts, RKC should have a presence at caving events whenever possible. RKC will pursue BGG and ESSO as members.

### V. Next Meeting

The next meeting is tentatively set for Sunday, October 30, 2005 since the cave cleanup will take place the prior day.

Meeting adjourned at approximately 9:45 p.m.

*Submitted by* LISA PRUITT-THORNER

Secretary



#### RKC T-Shirts!

Price: \$15.00, RKC member price \$10.00

100% Pre-shrunk Heavy Weight Cotton, Navy Blue / Gold

Designed by Robert Coomer

Sizes: M, L, XL, (sorry no XXL or S). Quantities are limited.

All proceeds benefit The RKC.

Order on line: <http://www.rkci.org/tshirt.htm>



#### RKC Life Member T-Shirt

Green with RKC logo

See membership details for more information



# Rockcastle Watershed News: Escherichia coli contamination

By Deb Bledsoe

Our Subterranean Watershed Watch (SWW) sampling event in July turned up *Escherichia coli* (E. coli) contamination in many of the caves and surface streams we looked at. Several locations had high counts, over the swimming standard, as listed below:

## High Numbers

(greater than 130 Swimming Standard)

- Fletcher's Spring (Simpson),
- Green Fish Hill Cave (Fasick),
- Lover Cave (Dobbs),
- McHargue Branch (Dobbs),
- Renfro Creek (Fasick),
- Crooked Creek at Roundstone confluence (Doose).

## Low Numbers

(less than 130 Swimming Standard)

- Sinks of the Roundstone Cave (Estepp),
- Goochland (Stich),
- Pine Hill Blue Hole (Estepp).

## No Contamination

- Cooksburg Cave (Pugh),
- Mullins Springs (Addington),
- Boat Dock Spring (Pitcher),
- Goochland Cave (Addington),
- The Boils (Soluski).

It should be noted that drinking

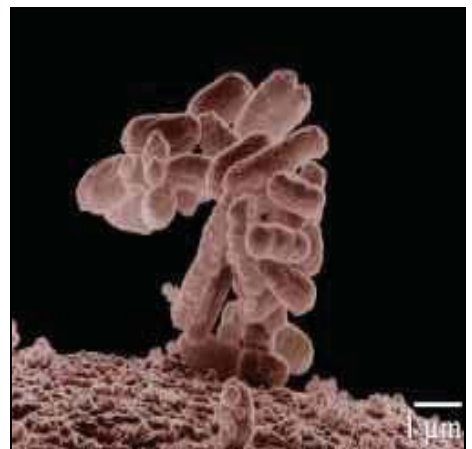
water standard is ZERO. If you know someone is using your spot as a drinking water source and you had a hit, you should let them know, or talk to me about it.

E. coli bacteria itself, with some rare exceptions, does not cause illness. It is present in human intestines and therefore when it is in the water, it's an "indicator" that generally means sewage is in the water. Where it survives, pathogens like typhus, hepatitis, cholera, and other bacteria can survive, if someone is ill upstream. If you come into contact with that water, you may be subject to getting sick.

If you are caving in the Rockcastle Region, be very conservative if you are coming into contact with water. Do not put your face or head into or under water, and it goes without saying that you should never drink from it. It doesn't hurt to use a hand sanitizer before eating, and you should avoid being in the water with open cuts or sores. Always mention this to youth groups caving in the area.

Now is the time to be thinking about sampling sites to be added for next year, and to think about recruiting some able bodies to attend the Annual Meeting and for next year's sampling also. Caves we need to be covering include

but are not limited to Artesian Well, John Griffen, and a BUNCH in Pulaski County in the Buck Creek/Sinking Valley area, like Short Creek. Jackson County also has NO sampling sites established, either surface or subterranean. This is a big hole in our coverage. Focus should be on caves that see human traffic where it is necessary to be in the water, and any cave with water that has existing or new housing going in above it.



***Escherichia coli* at 10,000x magnification** (The Wikipedia Encyclopedia)

Coliform contamination of karst groundwater should be assumed as a given, no matter where you cave.

If you would like to take part in the SWW water sampling program, you will need to commit to 5 Saturdays a year: 1 training, 3 mornings for sampling events, and 1 annual meeting. We need samplers in Jackson, Pulaski, and Wayne Counties for starters. Contact me (Deb Bledsoe) for details. Also get info at:

<http://rkci.org/watertesting.shtml>



## **Protect Kentucky's Karst Aquifers From Non-Point Source Pollution**

**Author: Jim Currens – Kentucky Geological Survey**

### **What Is a Karst Aquifer?**

Much of the ground water in Kentucky is stored in karst aquifers. An aquifer is a body of sand, gravel, fractured bedrock, or other earth material that can provide enough water from a well or spring to supply a household. A karst aquifer is limestone (or other easily dissolved rock) that has been partly dissolved so that some fractures are enlarged into passages (called conduits) that carry the ground-water flow. Karst aquifers are susceptible to pollution because runoff can enter these conduits through sinkholes and swallow holes (depressions into which a stream disappears underground) without the benefit of being filtered through sand, gravel, or even soil. The water flows very quickly through the aquifer, which doesn't allow much warning time for ground-water users downstream of a pollution incident.

### **What Is Nonpoint-Source Pollution?**

Pollution that comes from widely distributed sources instead of from a single discharge pipe or other easily identified point of discharge is called "nonpoint-source pollution." It's also called "runoff pollution." Examples of nonpoint pollution sources are runoff from golf courses, soil washed from farm fields and construction and logging sites, animal waste from feedlots, waste from home septic tanks, pesticides from lawns, trash dumped in sinkholes, and fertilizers. To keep ground water safe to use, pollution must be kept out of the karst aquifer. Nonpoint-source pollution is difficult to keep out of aquifers because regulations and technical solutions are difficult to apply when a specific source cannot be identified. Personal responsibility of all citizens living in karst areas, especially those handling or disposing of potential pollutants, is the best remedy.

### **How Does a Karst Aquifer Become Polluted?**

Pollution that comes from widely distributed sources instead of from a single discharge pipe or other easily identified point of discharge is called "nonpoint- source pollution." It's also called "runoff pollution." Examples of nonpoint pollution sources are runoff from golf courses, soil washed from farm fields and construction and logging sites, animal waste from feedlots, waste from home septic tanks, pesticides from lawns, trash dumped in sinkholes, and fertilizers. To keep ground water safe to use, pollution must be kept out of the karst aquifer. Nonpoint-source pollution is difficult to keep out of aquifers because regulations and technical solutions are difficult to apply when a specific source cannot be identified. Personal responsibility of all citizens living in karst areas, especially those handling or disposing of potential pollutants, is the best remedy.

### **Why Are Karst Aquifers Important?**

Although karst aquifers are vulnerable to pollution, in Kentucky they're an important source of water agriculture and drinking water. s also important to protect the watersheds of springs that are not used directly for human needs. This is because they provide a significant percentage of the flow of surface streams. In fact, water from karst springs maintains the flow of many creeks and streams during drought. The water quality of a spring may influence the water quality of the stream into which it flows. In addition to protecting human health, it's important to protect the health of cave wildlife, some of which are classified as rare or endangered species. They also depend upon clean ground water.








## How Can You Protect Karst Aquifers?

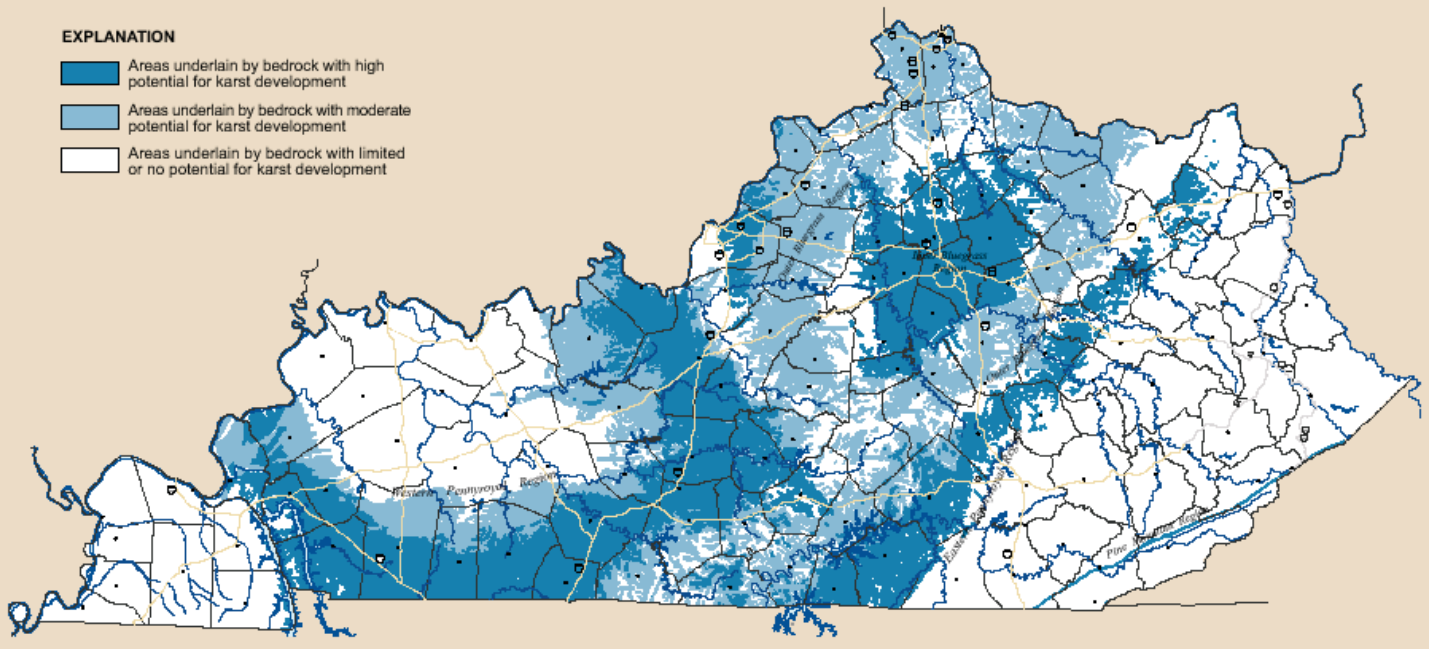
- Never use sinkholes as dumps. All waste, but especially pesticides, paints, household chemicals, automobile batteries, and used motor oil should be taken to an appropriate recycling center or landfill.
- Make sure runoff from parking lots, streets, and other urban areas is routed through a detention basin and sediment trap to filter it before it flows into a sinkhole.
- Make sure your home septic system is working properly and that it's not discharging sewage into a crevice or sinkhole.
- Keep cattle and other livestock out of sinkholes and sinking streams. There are other methods of providing water to livestock.
- See to it that sinkholes near or in crop fields are bordered with trees, shrubs, or grass "buffer strips." This will filter runoff flowing into sinkholes and also keep tilled areas away from sinkholes.
- Construct waste-holding lagoons in karst areas carefully, to prevent the bottom of the lagoon from collapsing, which would result in a catastrophic emptying of waste into the aquifer.
- If required, develop a ground-water protection plan (410KAR5:037) or an agriculture water-quality plan (KRS224.71) for your land use.

## KARST OCCURRENCE IN KENTUCKY

Randall L. Paylor and  
James C. Currens

### EXPLANATION

-  Areas underlain by bedrock with high potential for karst development
-  Areas underlain by bedrock with moderate potential for karst development
-  Areas underlain by bedrock with limited or no potential for karst development





## *Cave Conservancy of the Virginias*

*13131 Overhill Lake Lane  
Glen Allen, Virginia 23059*

*Phone: (804) 798-4893*

*Fax: (804) 798-4894*

*Appreciate,  
Conserve,  
Protect...*

2563 Split Rail Road  
Shawsville, Virginia 24162  
540.381.0790 e-mail: [cnmaus@bellatlantic.net](mailto:cnmaus@bellatlantic.net)  
July 8, 2005

TO: NSS Conservancy Forum  
FROM: Charles W. Maus

SUBJECT: "Living On Karst" Revision Request

Several years ago the Cave Conservancy of the Virginia (CCV) developed a layman's manual for residential environmental consideration when living on karst terrain. This publication, "Living on Karst" (LOK) has been reprinted several times, has been modified by several states for their distribution and appears on many web sites as a reference document. I believe that our distribution is approximately 30,000.

**The purpose of this request is to ask your assistance** in upgrading and possibly expanding this publication. It is requested that any thoughts that you might have to improve the publication and/or if you are interested in volunteering to be part of the upgrade team that you contact me through the above cited contact sources.

It is not our intent to reprint the documents with minor modifications. The team, yet to be formed, will be charged to establish if a completely new document is warranted, or if the current document can be modified and added to and subtracted from, or if an additional document is needed to supplement the current as is or modified. It is our hope that we can develop improvements that will continue to be a service document to karst landform protection.

Please let me know your thoughts on this matter,

Charles Maus



# Newest RKC Members as of this publication. Thank you for your support!

**Lifetime Members:**

Mary Gratsch, Cincinnati, OH  
Kevin Toepke, Starkville, MS

**Sustaining Members:**

Roger June, Cincinnati, OH

**Supporting Members:**

Annette Crosley, Goshen, OH  
Michael Harcourt, Williamsburg, OH  
Vince Harcourt, Batavia, OH  
Jennifer Pinkley, Taft, TN

**Individual Members:**

Bill Addington, Cincinnati, OH  
Thor Bahrman III, Corbin, KY  
Earl Bailey, Cincinnati, OH  
Deb Bledsoe, Livingston, KY  
Debbie Bowers, Beaver Creek, OH  
Janine Brown, Beaver Creek, OH  
John Cassidy, Tipp City, OH  
Tama Cassidy, Tipp City, OH  
Delbert Dawson, Walker, WV

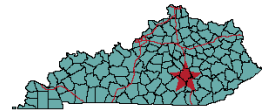
June Dawson, Walker, WV  
Tim Deady, Manchester, MI  
Sheri Dimmerman, Amelia, OH  
Trey Ferris, Middletown, OH  
Ron Fulcher, Xenia, OH  
Bryan Garness, Hartland, WI  
Joe Gibson, New Albany, OH  
Mike Goltzene, Miamisburg, OH  
Steven Greene, Dayton, OH  
Philip Henry, Westerville, OH  
Mike Hood, Riverside, OH  
Nathan Jud, Athens, OH  
Raymond Kutnar, Cleveland, OH  
Hilary Lambert, Lexington, KY  
Larry Loveless, Westland MI  
Mike Lucas, Trenton, OH  
Tammy Otten, Cincinnati, OH  
Rick Peters, Cincinnati, OH  
Sheila Peters, Cincinnati, OH  
Nadine Radkey, Cincinnati, OH  
Dave Rice, Kettering, OH  
Sandy Rice, Kettering, OH  
Sabrina Simon, Huntsville, AL

Bill Simpson, Cincinnati, OH  
Scott Sweet, Kettering, OH  
Karen Tadsen, Churubusco, IN  
Roy Vanhoozer, Lexington, KY  
Michelle Vaughn, Huntsville, AL

**Total: 82 individual members**

**Organizations:**

Dayton Underground Grotto, OH  
Greater Cincinnati Grotto, OH  
Huntsville Grotto  
Eastern States Speleological Society  
Blue Grass Grotto  
Minster Venture Crew 44



## Become a Member of RKC

**Join RKC and help preserve caves and cave access in the Rockcastle County, Kentucky region! Your membership dues go directly to efforts to purchase and manage caves.**

Date

Name - Please print clearly

Street

City, State & ZIP

Email Address

Telephone

### Memberships For Individuals - Voting

- Individual Member \$15/year
- Sustaining Member \$75/year (After five consecutive years a sustaining member becomes a Life Member (along with a special T-shirt).
- Life Member \$300/one time

### Memberships for Organizations or Individuals - Non Voting

- Supporting Member \$50/year
- Benefactor Member \$1,000/one time



**Dues expire on January 1 of each year. Individual and Supporting Member dues are half the amount after June 30.**

Membership Amount \$ \_\_\_\_\_

Additional Donation \$ \_\_\_\_\_

Total \$ \_\_\_\_\_

**Makes checks payable to the Rockcastle Karst Conservancy.**

Mail completed form and payment to:  
Rockcastle Karst Conservancy, 1515  
Cordell Drive, Dayton, Ohio 45439.