

Rockcastle Karst Conservancy

A Kentucky non-profit organization dedicated to the preservation of caves and karst in the Rockcastle County, Kentucky region.

The Rockcastle Karst Conservancy is a non-profit organization dedicated to preserving the unique geological, hydrological, biological, and recreational resources associated with caves and karst. Our goal is to permanently protect caves and karst lands in the Rockcastle County, Kentucky area through education, land acquisition and resource management.

Karst areas are being increasingly threatened by development, mining and poor agriculture practices. Ground water is becoming polluted from surface runoff and becoming a hazard to our communities, and all who live in them. This is not just a problem for people who live on karst, but also to anyone who depends on their natural resources, such as fresh water and it's native wildlife. Actions must be taken today to preserve these areas for future generations.

Our Mission. We are dedicated to saving caves and karst from pollution and exploitation for future generations.

What is Karst?

Karst is a special type of landscape that is formed by moving water and the dissolution of soluble rocks, including limestone and dolomite. Karst regions contain aquifers that are capable of providing large supplies of water. In simple terms, Karst is defined as a landscape with sinkholes, springs, and streams that sink

into caverns.

More than 25 percent of the world's population either lives on or obtains its water from karst aquifers. In the United States, 20 percent of the land surface is karst and 40 percent of the groundwater used for drinking comes from karst aquifers! Natural features of the landscape such as caves and springs are typical of karst regions. Karst landscapes are often spectacularly scenic areas such as the sinkhole plains and caves of central Kentucky and Rockcastle County.

The hollow nature of karst terrain results in a very high pollution potential. Streams and surface runoff enter sinkholes and caves, and bypass natural filtration through soil and sediment. Groundwater can travel quite rapidly through these underground networks - up to thousands of feet, or even miles, per day - transmitting contaminants to wells and springs in the vicinity.

Unless watersheds are protected, these direct connections between the surface and the subsurface can threaten the quality of our drinking water. The safest watersheds are those in which all residents understand the karst landscape and work together to reduce soil erosion, high-density development, agricultural and urban storm water runoff, overgrazing, improper waste disposal, and pollution.

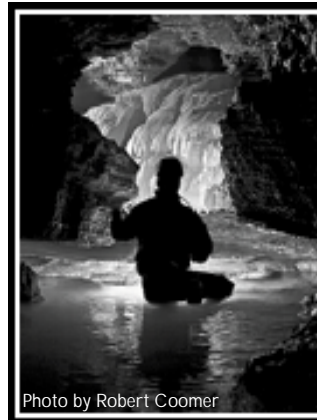


Photo by Robert Coomer

Our Mission.

We are dedicated to saving caves and karst from pollution and exploitation for future generations.

Caves are very unique ecosystems and sustain many life forms that can survive nowhere else. Many of these life forms may be important for future research and medicines. It may seem strange, but a future cure may be right under your feet.

Land Acquisition

The most effective way we have to protect caves and karst is land acquisition. The Rockcastle Karst Conservancy is actively seeking to purchase land that contains caves and karst. The Rockcastle Karst Conservancy is also seeking to lease karst land and to obtain conservation easements.



Inside This Issue:

<i>Officers and Directors</i>	2
<i>Karst Occurrence in Kentucky</i>	2
<i>RKC Meeting Minutes Friday, March 18, 2005</i>	3
<i>RKC Members</i>	4
<i>Become A Member of RKC</i>	4

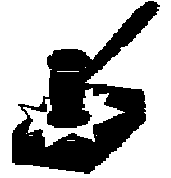
Thank you to Robert Coomer for putting together the RKC Brochure!

All photos in this newsletter have been obtained from the Brochure, and are copyrighted by Robert Coomer (www.RobertCoomer.com).

karst (kärst) - noun - An area of limestone in which erosion has produced fissures, sinkholes, underground streams, and caverns.



Officers and Directors



Officers

Chairman	Andy Niekamp	ajniekamp3@aol.com
Vice Chairman	Pat Hutson	caver723@aol.com
Treasurer	Werner Jud	orion@one.net
Secretary	Lisa Pruitt-Thorner	batscout@aol.com

Directors

Werner Jud	orion@one.net
Andy Niekamp	ajniekamp3@aol.com
Pat Hutson	caver723@aol.com
Lisa Pruitt-Thorner	batscout@aol.com
<i>To Be Determined</i>	

Committees



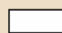
Membership	Andy Niekamp	ajniekamp3@aol.com
Newsletter	Traci Fearday	cavecricket@hotmail.com

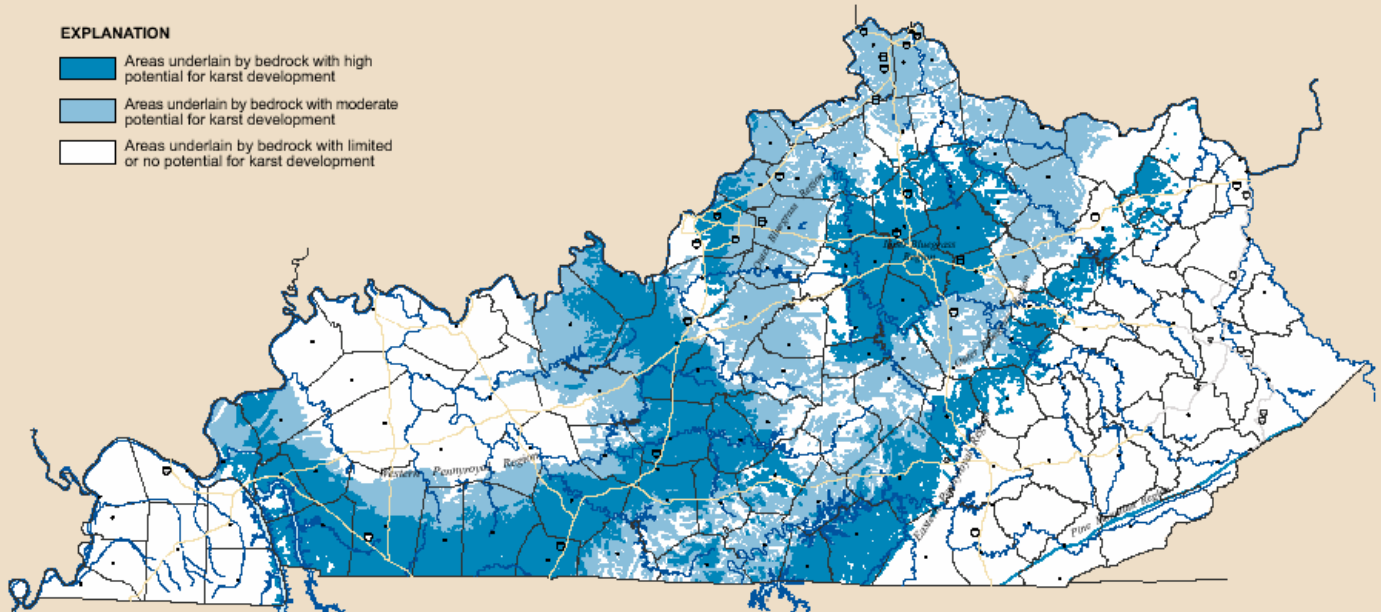


KARST OCCURRENCE IN KENTUCKY

Randall L. Paylor and
James C. Currens

EXPLANATION

-  Areas underlain by bedrock with high potential for karst development
-  Areas underlain by bedrock with moderate potential for karst development
-  Areas underlain by bedrock with limited or no potential for karst development





RKC Meeting Minutes

Friday, March 18, 2005

Meeting held on UK Campus,
Mines and Minerals Building,
Lexington, Ky.

In attendance:

Andy Niekamp
Werner Jud
Pat Hutson
Joetta Hutson
Pete Stow
Jerry Dixon
Lisa Pruitt-Thorner
Bob Dobbs

Annual Meeting called to order at 7:10 p.m. by Andy Niekamp. The first order of business concerned the finalized Bylaws. The Bylaws were discussed, Unanimously voted upon and officially adopted by the 3 current directors:

Andy Niekamp
Pat Hutson
Werner Jud

The Bylaws are now the official governing document of the RKC. Following adoption of the bylaws, the three directors discussed the necessity of adding 2 more directors, based upon practicality and recommendations of the Felburn Foundation. Lisa Pruitt-Thorner was nominated as a fourth director. All three directors above unanimously voted upon and elected Lisa Pruitt-Thorner as a fourth director. Following the election of a fourth director, officer positions were discussed. Andy Niekamp made a motion, based upon the bylaws, to appoint/elect directors for the following officer's positions:
Andy Niekamp - Chairperson
Pat Hutson - Vice Chairperson

Werner Jud - Treasurer
Lisa Pruitt-Thorner - Secretary.

Motion was seconded. All four directors accepted nominations for said officer positions and the board unanimously voted upon officer positions. The four directors now hold the above offices. Andy Niekamp requested that the secretary begin her official duties by keeping minutes for the meeting and she agreed.

The next order of business was the 501(c)(3) IRS application for recognition of tax exemption. Lisa Pruitt-Thorner has been working on the application and she passed out copies of her work in progress. Various items and portions of the 501(c)(3) application were discussed. Lisa suggested that a summary of the Rockcastle Karst Conservancy and/or Great Saltpetre Preserve would be a supportive attachment to the application. Werner Jud agreed to provide said summary. Lisa said that she would rework the budget to reflect more realistic numbers for RKC's next three years. Various sources of possible income and fundraising opportunities were discussed by board members and attendees.

The next order of business was the institution of a Membership Drive. Andy Niekamp handed out a proposed application for membership. The board approved the application by unanimous vote. Ideas

for membership opportunities such as charter members for 2005, membership cards and membership numbers were discussed. Andy Niekamp volunteered to be chairperson of the membership committee. Andy Niekamp became the first official member of the RKC. Several board members and attendees paid their dues and also became initial and charter members of the RKC.

Andy Niekamp discussed a fundraising drive and the preparation of an informational brochure or "fact sheet" for RKC. A tri-fold one page model seemed best suited for RKC's budget and efforts. Andy asked board members to obtain member addresses from local grottos.

Andy next brought up RKC's logo. Rob Coomer has put a significant amount of time into developing eye-catching professional logo designs for RKC. Andy presented several different versions which were prepared by Rob Coomer. The board and attendees discussed which ones were preferable and two or three were picked out as the best options.

Werner Jud discussed conservation and the NSS newsletter. The February NSS newsletter had an emphasis on conservation. Cave cleanups were discussed and the National Geographic feature.

At 9:10 p.m., all board members unanimously voted to adjourn the first official and annual meeting of the Rockcastle Karst Conservancy. Once approved and signed, these minutes shall also serve as an official resolution to adopt the bylaws, to elect officers, to adopt the membership application and to elect a fourth director.



RKC Quicknews

- RKC has 38 members as of publication date!
- An email distribution list for RKC has been created: members@rkci.org
- Our application for 501(c)(3) status has been received by the IRS. Approval could take up to 120 days.
- Are you interested in helping man a booth at KOR? Contact Andy Niekamp.
- RKC needs a portable, table-top, trade show display unit to use at events to promote the organization. Contact Andy Niekamp if you know where one can be found.
- RKC now has an informational brochure that can be taken to caving events. A .pdf version can be seen on the webpage. Contact Andy Niekamp if you would like printed copies to distribute.
- RKC t-shirts are coming soon and will be available for purchase!



Photo by Robert Coomer



RKC Members

As of this publication. Thank you for your support!

Lifetime Members:

Ron Crawford, Villa Hills, KY
 Bob Dobbs, Cincinnati, OH
 Kim Hedges, Kettering, OH
 Kenny Hedges, Kettering, OH
 Howard Kalnitz, Gape Girardeau, MO
 David Lee, Erlanger, KY
 Mark Moore, Yahkeetown, FL
 Andy Niekamp, Kettering, OH
 Ellie Schiller, Yahkeetown, FL
 Brian Sininger, Fairfield, OH
 Jeff Thien, Cincinnati, OH

Sustaining Members:

Stacy Doose, Paris, KY

Individual Members:

Wayne Barton, Cincinnati, OH
 Ken Bonenberger, Dayton, OH
 Jerry Brandenburg, Loveland, OH
 Pam Carpenter, Kettering, OH
 Rob Coomer, Batavia, OH
 Mike Deitmaring, Latonia, KY
 Jean DeVries, Jenison, MI
 Gerald Dixon, Maysville, KY
 Alan Fearday, Beaver creek, OH
 Traci Fearday, Beaver creek, OH
 Sheila Gallogly, Miamisburg, OH
 Jeff Gillette, Hawesville, KY
 Jim Helmbold, Centerville, OH
 Pat Hutson, Paris, KY
 Joetta Hutson, Paris, KY

Werner Jud, Cincinnati, OH
 Neena Jud, Cincinnati, OH
 Gary O'Dell, Morehead, KY
 Lisa Pruitt-Thorner, Catlettsburg, KY
 Brian Saul, Portsmouth, OH
 Bruce Silvers, Fort Wayne, IN
 Todd Staten, Burlington, KY
 Pete Stow, Florence, KY
 Mark Swelstad, Columbus, OH
 John Taylor, Barbourville, KY
 Robert Thurber, Newport News, VA



Become a Member of RKC

Join RKC and help preserve caves and cave access in the Rockcastle County, Kentucky region! Your membership dues go directly to efforts to purchase and manage caves.

Date _____

Name - Please print clearly _____

Street _____

City, State & ZIP _____

Email Address _____

Telephone _____

Memberships For Individuals - Voting

- Individual Member \$15/year
- Sustaining Member \$75/year (After five consecutive years a sustaining member becomes a Life Member)
- Life Member \$300/one time

Memberships for Organizations or Individuals - Non Voting

- Supporting Member \$50/year
- Benefactor Member \$1,000/one time



Dues expire on January 1 of each year. Individual and Supporting Member dues are half the amount after June 30.

Membership Amount \$ _____

Additional Donation \$ _____

Total \$ _____

Makes checks payable to the Rockcastle Karst Conservancy.

Mail completed form and payment to:
 Rockcastle Karst Conservancy, 1515
 Cordell Drive, Dayton, Ohio 45439.